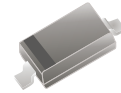


ASD103xWS-HF Series

RoHS Device
Halogen Free



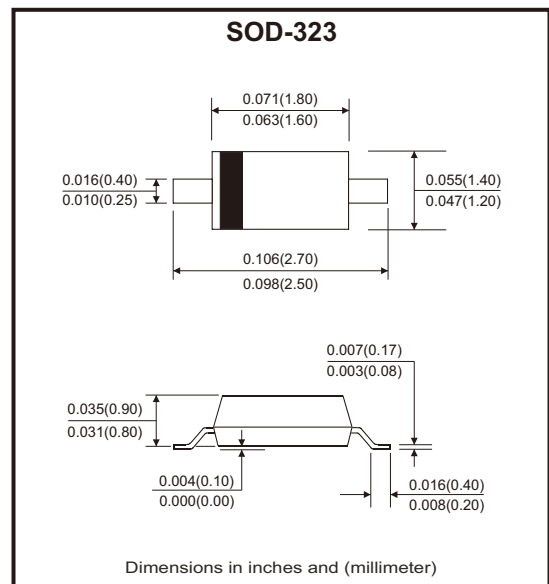
Features

- Epoxy meets UL-94 V-0 flammability rating.
- Moisture sensitivity Level 1.
- For surface mount application.
- AEC-Q101 Qualified.

Mechanical data

- Case: SOD-323, molded plastic.
- Terminals: Tin plated leads, solderable per J-STD-002 and JESD22-B102.
- Polarity: Cathode line denotes the cathode end.

Circuit Diagram



Maximum Rating (at Ta=25°C unless otherwise noted)

Parameter	Symbol	ASD103AWS-HF	ASD103BWS-HF	ASD103CWS-HF	Unit
Peak repetitive reverse voltage	V _{RRM}	40	30	20	V
Average forward current	I _{FAV}	0.35			A
Peak forward surge current 8.3ms, half sine	I _{FSM}	1.5			A
Power dissipation	P _{tot}	200			mW
Thermal resistance junction to ambient	R _{θJA}	500			°C/W
Maximum junction temperature range	T _J	-55 to +125			°C
Storage temperature range	T _{STG}	-55 to +150			°C

Electrical Characteristics (at Ta=25°C unless otherwise noted)

Parameter	Symbol	Conditions	Min	Max	Unit
Reverse breakdown voltage	$V_{(BR)R}$	$I_R = 100\mu A$	40 30 20		V
Forward voltage	V_F	$I_F = 20mA$		0.37	V
Forward voltage	V_F	$I_F = 200mA$		0.60	V
Reverse leakage current	I_R	$V_R = 30V$ $V_R = 20V$ $V_R = 10V$		5	μA
Junction capacitance	C_J	$V_R = 0V, f = 1MHz$		50	pF

Rating and Characteristic Curves (ASD103AWS-HF Thru. ASD103CWS-HF)

Fig.1 - Forward Characteristics

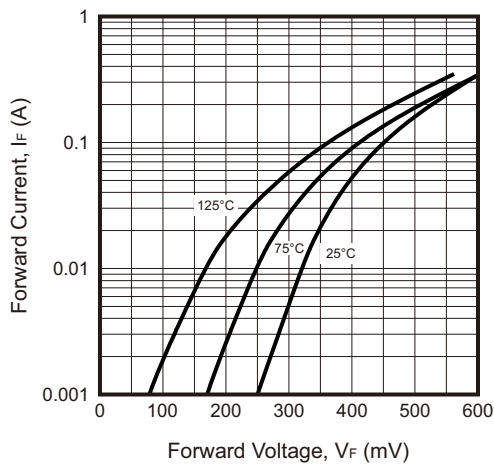


Fig.2 - Reverse Characteristics

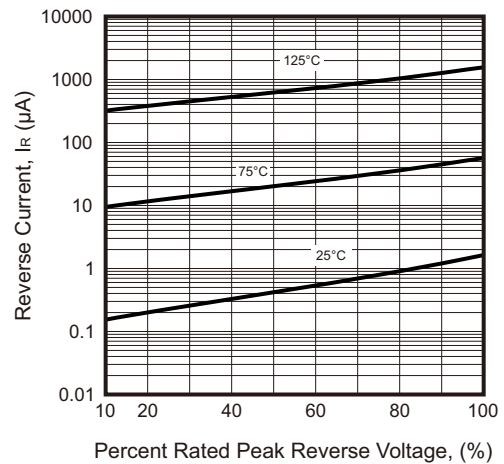
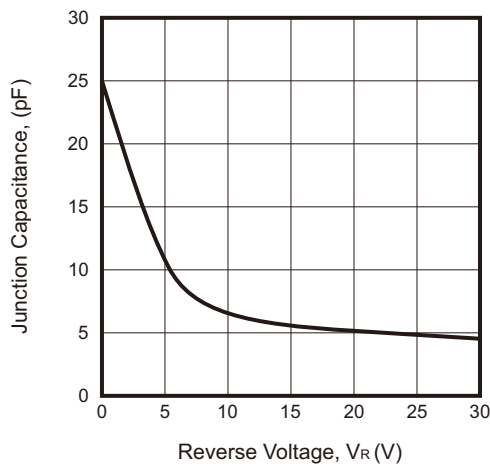


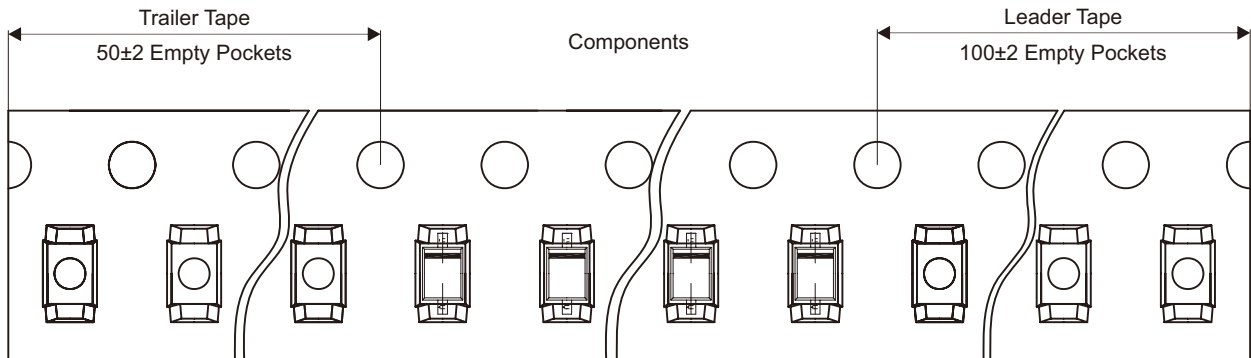
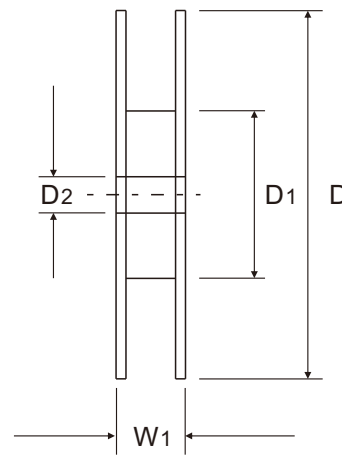
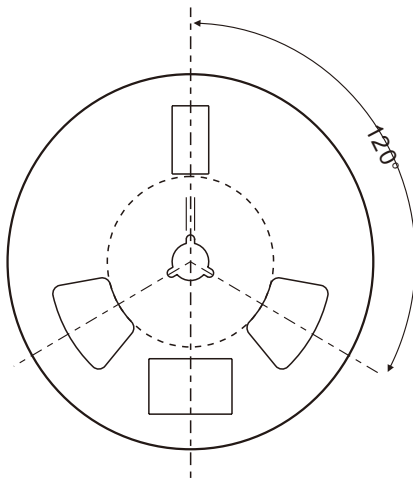
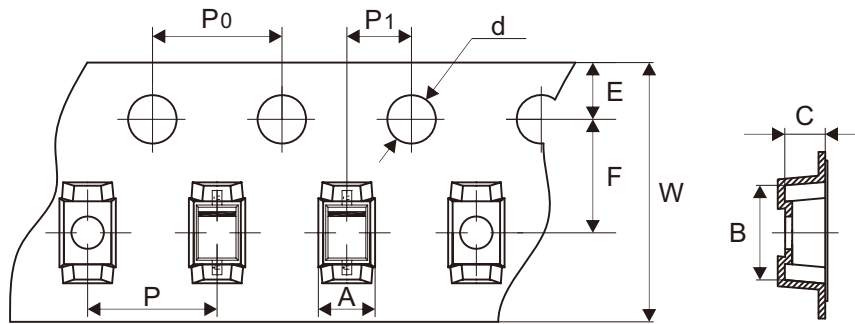
Fig.3 - Junction Capacitance



Company reserves the right to improve product design, functions and reliability without notice.

REV:A

Reel Taping Specification



SOD-323	SYMBOL	A	B	C	d	D	D1	D2
	(mm)	1.46 ± 0.10	2.90 ± 0.10	1.25 ± 0.10	1.50 + 0.10 - 0.00	178.00 ± 1.00	54.60 ± 0.20	13.30 ± 0.20
	(inch)	0.057 ± 0.004	0.114 ± 0.004	0.049 ± 0.004	0.059 + 0.004 - 0.000	7.008 ± 0.039	2.150 ± 0.008	0.524 ± 0.008

SOD-323	SYMBOL	E	F	P	P0	P1	W	W1
	(mm)	1.75 ± 0.10	3.50 ± 0.05	4.00 ± 0.10	4.00 ± 0.10	2.00 ± 0.05	8.00 + 0.30 - 0.10	9.60 ± 0.20
	(inch)	0.069 ± 0.004	0.138 ± 0.002	0.157 ± 0.004	0.157 ± 0.004	0.079 ± 0.002	0.315 + 0.012 - 0.004	0.378 ± 0.008

Company reserves the right to improve product design, functions and reliability without notice.

REV:A

Marking Code

Part Number	Marking Code
ASD103AWS-HF	S4.
ASD103BWS-HF	S5.
ASD103CWS-HF	S6.

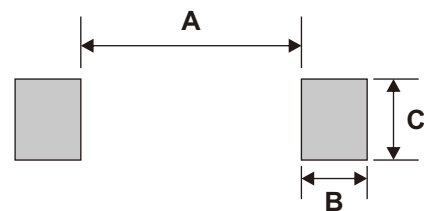


█ = Cathode band

xx = Product type marking code

Suggested P.C.B. PAD Layout

SIZE	SOD-323	
	(mm)	(inch)
A	1.88	0.074
B	0.56	0.022
C	0.69	0.027



Note: 1.The pad layout is for reference purposes only.

Standard Packaging

Case Type	REEL PACK	
	REEL (pcs)	Reel Size (inch)
SOD-323	3,000	7